



## Lavender Cottage, Pickering

Sleeps 4



This is a lovely new two bedroom semi detached cottage property (sleeps 4) which was built in 2009. It is located in Pickering only a short walk into the town centre. The property has dedicated off road parking for two cars and an enclosed garden at the rear.

This cottage is available from March 2010.

<b>Bedrooms</b>	2
<b>Bathrooms</b>	1
<b>Price Band</b>	C
<b>Garden</b>	Enclosed
<b>Pets</b>	Yes
<b>Parking</b>	Off Road
<b>Children</b>	Yes
<b>Heating</b>	Gas
<b>One Level</b>	No
<b>Fire</b>	Gas
<b>Changeover</b>	Saturday

\* One medium or two small dogs only

## Accommodation

### Ground Floor

Entrance Hall:	Leading to lounge
Lounge:	Colour TV, Freeview, DVD, under stairs storage.
Kitchen:	Fully fitted with gas hob, electric oven, wash/dryer, fridge/freezer and microwave
Dining Area:	Table with seating for four people.
Cloakroom:	W.C. and washbasin

### First Floor

Bedroom 1:	Wooden double bed, matching bedside tables, chest of drawers, mirror and wardrobe.
Bedroom 2:	Divan zip and link beds, bedside tables and wardrobe. Note: 750mm wide beds are slightly narrower than normal single beds.
Bathroom:	P shaped bath with thermostatic shower over, wash basin and W.C.

### Outside

Garden	Enclosed rear garden with sloped paving up to the back door.
Patio	Patio area with table and four chairs and a barbecue.
Parking	At the front of the property, off road designated parking for two cars.





## Local Information

Shops:	Small Co-op convenience store less than 5 minutes walk away.
Nearest Town:	Pickering town centre is 5 minutes walk, has extensive shopping including a small supermarket (Market day is Monday).
Public Transport:	Pickering is well served by bus routes, there is a bus stop within 100 yards of the cottage, we are happy to meet you and help with the luggage. Nearest rail station is in Malton 10 miles from Pickering.
Eating Out:	Pickering has many restaurants and takeaways most within easy walk of the cottages. There is a file in the cottage with sample menus for many local restaurants.
Places to visit and things to do:	We are within walking distance of the North Yorkshire Moors steam railway, Pickering Castle, Beck Isle Museum and the swimming pool. Pickering is on the edge of the North Yorkshire National Park, fantastic for walking or site seeing. Whitby and Scarborough on the coast are within an easy drive as is Castle Howard and a host of other historic properties.

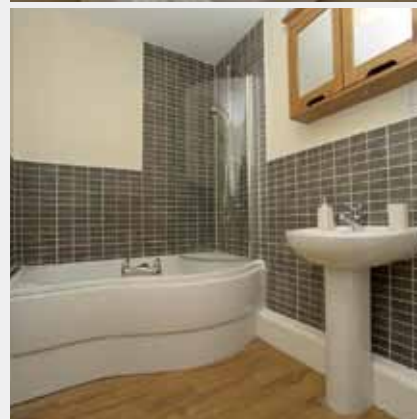
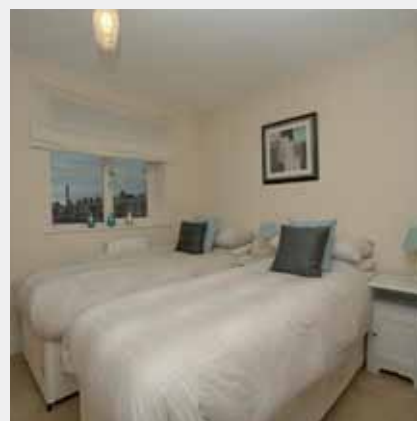
## Facilities

Linen	Duvets, towels, bath sheet and hand towels plus kitchen linen included.			
Fuel	Price includes electric, gas central heating, and hot water.			
Kitchen Equipment	Electric Oven	Gas Hob	Fridge/Freezer	
	Microwave	Electric Hand Whisk	Electric Kettle	
	Crockery	Cutlery	Saucepans	
	Utensils	Toaster		
Electronic	28" LCD TV	DVD Player		
	Free view Receiver	CD Radio		
Visitor Information	Welcome file with an A-Z of useful information as well as a comprehensive tourist information folder with suggested itinerary, walks, events and places to visit.			
Extras	Cot	No	Highchair	No
	Stair-gate	No	Daily Cleaning	No
	Accessibility Equipment	No	Wheelchair	No
	All available on request			
Office	Internet, email, and fax available at our main office in Pickering			
Laundry	Washer/Dryer in kitchen. Clothes airer, iron and ironing board available.			
Cleaning Equipment	Basic cleaning material and equipment, including a vacuum cleaner, are in the cottage.			
Other Items:	Hair dryer	Books and games		
	Shaver Point			
Welcome:	All guests are greeted on arrival with site and cottage orientation. A complimentary tea and coffee tray is supplied with fresh milk. All cottages are cleaned prior to your arrival. The normal arrival time is 2pm although you are welcome to arrive earlier and park up on site. Departure time is normally 10am on the day of departure. There is a staffed office on site. (Mon-Sat)			

## Weekly Prices 2010

From	To	Per Week
08 Jan	- 11 Feb	£320.00
12 Feb	- 18 Feb	£350.00
19 Feb	- 25 Mar	£350.00
26 Mar	- 15 Apr	£435.00
16 Apr	- 29 Apr	£375.00
30 Apr	- 06 May	£375.00
07 May	- 27 May	£425.00
28 May	- 03 June	£525.00
04 June	- 24 June	£465.00
25 June	- 01 July	£475.00
02 July	- 08 July	£495.00
09 July	- 15 July	£500.00
16 July	- 26 Aug	£525.00
27 Aug	- 09 Sep	£455.00
10 Sep	- 23 Sep	£435.00
24 Sep	- 07 Oct	£410.00
08 Oct	- 28 Oct	£470.00
29 Oct	- 20 Dec	£360.00
21 Dec	- 06 Jan	£510.00
07 Jan	- 13 Jan	£330.00

3 & 4 night breaks available from October to April excluding holidays and festival dates, please contact us or visit our website for more details.



Availability and to book online visit [www.eastgategcottages.co.uk](http://www.eastgategcottages.co.uk) or call us on 01751 476653