



Bransdale Cottage, Pickering ★★★★★

Sleeps 4



This fabulous, 200 year old, grade 2 listed period cottage has been fitted to an exceptionally high specification retaining and restoring the many period features including beams and an original window seat. Traditional cottage charm is combined with a luxurious and contemporary decor. This exclusive five star, cottage has some luxury extra's including bathrobes, special bathroom toi-

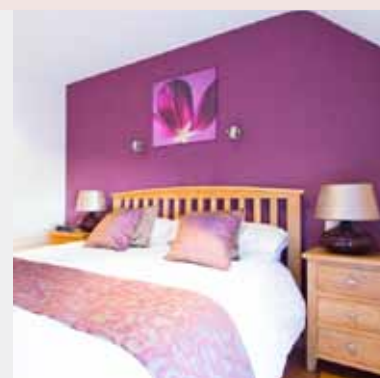
Bedrooms	2
Bathrooms	2
Price Band	E
Garden	Enclosed
Pets	Yes*
Parking	Off Road
Children	Yes
Heating	Gas
One Level	No
Fire	Log
Changeover	Saturday

letries and a bottle of wine.

* One medium or two small dogs only

Accommodation

Ground Floor	Open plan living/dining area.
Lounge:	Spacious beamed lounge/diner. Period features include window seat and beams. It benefits from a stone fireplace with wood burner. Equipped with flat screen LCD TV, Home Cinema system, DVD recorder and Hi-fi.
Dining Area:	Light oak dining suite with seating for four people. Plenty of good quality crockery, cutlery and glassware.
Kitchen:	Light, bright and modern. Well equipped with dishwasher, washing machine, microwave, electric cooker and fridge/freezer plus a good range of cooking utensils. Patio doors to garden.
First Floor	
Bedroom:	An elegant contemporary room with king size bed. Luxury linen and coordinating light oak furnishings. Bedside lamps and over bed reading lights. The room accommodates a cot.
Bathroom:	Stunning spacious luxury bathroom. Equipped with a contemporary freestanding bath, walk-in shower with thermostatically controlled shower head, wash basin, and W/C.
Bedroom 2:	This room has real character with a beamed vaulted ceiling. Luxury bed available as either twin or superking bed with luxury coordinating light oak furnishings.
	Integral bathroom with freestanding feature luxury bath, washbasin and W/C.
Outside	
Conservatory	Private dining and sitting area.
Garden	Private walled garden with patio area table, chairs, and sun umbrella. A BBQ is available.
Outbuildings	Laundry room with washing machine, tumble dryer & freezer.
Parking	Off-road private parking is available at our main Eastgate Cottages complex adjacent to the cottage.





Local Information

Shops:	Local shop 2 minutes walk.
Nearest Town:	Pickering town centre is 5 minutes walk, has extensive shopping including a small supermarket (Market day is Monday).
Public Transport:	Pickering is well served by bus routes, there is a bus stop within 100 yards of the cottage, we are happy to meet you and help with the luggage. Nearest rail station is in Malton 10 miles from Pickering.
Eating Out:	Pickering has many restaurants and takeaways most within easy walk of the cottages. There is a file in the cottage with sample menus for many local restaurants.
Places to visit and things to do:	We are within walking distance of the North Yorkshire Moors steam railway, Pickering Castle, Beck Isle Museum and the swimming pool. Pickering is on the edge of the North Yorkshire National Park, fantastic for walking or site seeing. Whitby and Scarborough on the coast are within an easy drive as is Castle Howard and a host of other historic properties.

Facilities

Linen	Luxury duvets, pillows, bed linen, and towels; bath sheet and hand towels plus kitchen linen are provided. Blankets available on request.
Fuel	Price includes electric, gas central heating, coal, logs, and hot water.

Kitchen Equipment	Electric Cooker	Washing Machine	Microwave
	Electric Kettle	Fridge/Freezer	Dishwasher
	Denby crockery	Cutlery	Saucepans
	Utensils	Toaster	

Electronic	32" LCD TV	DVD Recorder	Wi-fi enabled
	DVD Library	Hifi with CD and radio	Home Cinema System

Visitor Information	Welcome file with an A-Z of useful information as well as a comprehensive tourist information folder with suggested itinerary, walks, events and places to visit.
---------------------	---

Extras	Cot	Yes	Highchair	Yes
	Stair-gate	Yes	Daily Cleaning	£15
	Accessibility Equipment	Yes	Wheelchair	Yes
	All available on request			

Office	Internet, email, and fax available at our main office in Pickering
--------	--

Laundry	Tumble dryer in the on-site laundry room Clothes airer, iron and ironing board available.
---------	--

Cleaning Equipment	Cleaning material and equipment, including a vacuum cleaner, are available in the cottage.
--------------------	--

Other Items:	Hair dryer	Books and games
	Shaver Point	Radio Alarm Clock

Welcome:	All guests are greeted on arrival with site and cottage orientation. A complimentary tea and coffee tray is supplied with fresh milk. All cottages are cleaned prior to your arrival.
	The normal arrival time is 3pm although you are welcome to arrive earlier and park up on site.
	Departure time is normally 10am on the day of departure.
	There is a staffed office on site. (Mon-Sat)

Weekly Prices 2010

From	To	Per Week
08 Jan	- 11 Feb	£370.00
12 Feb	- 18 Feb	£500.00
19 Feb	- 25 Mar	£500.00
26 Mar	- 15 Apr	£550.00
16 Apr	- 29 Apr	£495.00
30 Apr	- 06 May	£520.00
07 May	- 27 May	£520.00
28 May	- 03 June	£645.00
04 June	- 24 June	£575.00
25 June	- 01 July	£585.00
02 July	- 08 July	£650.00
09 July	- 15 July	£660.00
16 July	- 26 Aug	£660.00
27 Aug	- 09 Sep	£580.00
10 Sep	- 23 Sep	£550.00
24 Sep	- 07 Oct	£500.00
08 Oct	- 28 Oct	£600.00
29 Oct	- 20 Dec	£460.00
21 Dec	- 06 Jan	£680.00
07 Jan	- 13 Jan	£400.00

3 & 4 night breaks available from October to April excluding holidays and festival dates, please contact us or visit our website for more details.



This property is situated on a main road with access from a private courtyard. It is secondary double glazed and sound insulated to minimise road noise.

Availability and to book online visit www.eastgatecottages.co.uk or call us on 01751 476653