



## Cinnamere Cottage, Pickering ★★★★★

Sleeps 4



This lovely period cottage has been completely renovated to a very high standard. It is located on Eastgate a lovely tree lined road and is within easy walking distance of the town centre of Pickering. It has its own garage parking and a large private lawned garden with patio and has double glazed units throughout.

<b>Bedrooms</b>	2
<b>Bathrooms</b>	1
<b>Price Band</b>	D
<b>Garden</b>	Enclosed
<b>Pets</b>	Yes*
<b>Parking</b>	Off Road
<b>Children</b>	Yes
<b>Heating</b>	Gas
<b>One Level</b>	No
<b>Fire</b>	Gas
<b>Changeover</b>	Saturday

\* One medium or two small dogs only

## Accommodation

### Ground Floor

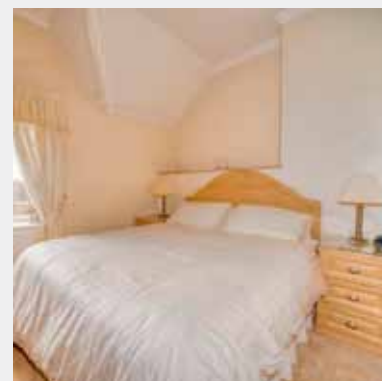
Lounge:	Large light and airy room with feature gas log effect fire. 28" TV with digibox and video recorder and C.D player.
Dining Area:	Spacious dining area with table seating four people and adjacent patio doors into the garden.
Kitchen:	Fully fitted kitchen is equipped with electric oven and hob, microwave, dishwasher, fridge/freezer, kettle and toaster.
Outside Utility:	Equipped with washing machine, tumble dryer iron and ironing board

### First Floor

Bedroom 1:	Spacious bedroom with lovely king size bed with luxurious bedding. The room has a large fitted wardrobe with plenty of hanging space.
Bathroom:	Large luxury bathroom, with large corner bath, separate shower cubicle, wash basin, and WC.
Bedroom 2:	A smaller room to the rear of the property with twin single beds and pine chest of drawers.

### Outside

<b>Garden</b>	Large enclosed lawned garden.
Patio	Large patio with table and chairs.
Parking	Both off road and garage parking is situated at the top of the garden.
Outbuildings	Small garden shed - bicycle storage and barbeque.





## Local Information

Shops:	Local shop 2 minutes walk.
Nearest Town:	Pickering town centre is 10 minutes walk, has extensive shopping including a small supermarket (Market day is Monday).
Public Transport:	Pickering is well served by bus routes, there is a bus stop within 100 yards of the cottage, we are happy to meet you and help with the luggage. Nearest rail station is in Malton 10 miles from Pickering.
Eating Out:	Pickering has many restaurants and takeaways most within easy walk of the cottages. There is a file in the cottage with sample menus for many local restaurants.
Places to visit and things to do:	We are within walking distance of the North Yorkshire Moors steam railway, Pickering Castle, Beck Isle Museum and the swimming pool. Pickering is on the edge of the North Yorkshire National Park, fantastic for walking or site seeing. Whitby and Scarborough on the coast are within an easy drive as is Castle Howard and a host of other historic properties.

## Facilities

Linen	Luxury duvets, pillows, bed linen, and towels; bath sheet and hand towels plus kitchen linen are provided. Blankets available on request.		
Fuel	Price includes electric, gas central heating, and hot water.		
Kitchen Equipment	Electric Oven Fridge/Freezer Electric Kettle Cutlery	Dishwasher Washing Machine Toaster Saucepans	Microwave Tumble Dryer Crockery Utensils

Electronic	Flat screen TV DVD's/Videos	Video Hifi with CD and radio	DVD Player
------------	--------------------------------	---------------------------------	------------

Visitor Information	Welcome file with an A-Z of useful information as well as a comprehensive tourist information folder with suggested itinerary, walks, events and places to visit.		
---------------------	---	--	--

Extras	Cot	Yes	Highchair	Yes
	Stair-gate	Yes	Daily Cleaning	£15
	Accessibility Equipment	Yes	Wheelchair	Yes
	All available on request			

Office	Internet, email, and fax available at our main office in Pickering
--------	--

Laundry	Washing machine and tumble dryer in the on-site laundry room Clothes airer, iron and ironing board available.
---------	--

Cleaning Equipment	Cleaning material and equipment, including a vacuum cleaner, are available in the cottage.
--------------------	--

Other Items:	Hair dryer	Books and games
	Shaver Point	Radio Alarm Clock

Welcome:	All guests are greeted on arrival with site and cottage orientation. A complimentary tea and coffee tray is supplied with fresh milk. All cottages are cleaned prior to your arrival. The normal arrival time is 3pm although you are welcome to arrive earlier and park up on site. Departure time is normally 10am on the day of departure.
----------	---

## Weekly Prices 2010

From	To	Per Week
08 Jan	- 11 Feb	£350.00
12 Feb	- 18 Feb	£385.00
19 Feb	- 25 Mar	£385.00
26 Mar	- 15 Apr	£485.00
16 Apr	- 29 Apr	£405.00
30 Apr	- 06 May	£415.00
07 May	- 27 May	£465.00
28 May	- 03 June	£590.00
04 June	- 24 June	£525.00
25 June	- 01 July	£525.00
02 July	- 08 July	£575.00
09 July	- 15 July	£575.00
16 July	- 26 Aug	£605.00
27 Aug	- 09 Sep	£535.00
10 Sep	- 23 Sep	£515.00
24 Sep	- 07 Oct	£440.00
08 Oct	- 28 Oct	£525.00
29 Oct	- 20 Dec	£385.00
21 Dec	- 06 Jan	£575.00
07 Jan	- 13 Jan	£355.00

3 & 4 night breaks available from October to April excluding holidays and festival dates, please contact us or visit our website for more details.



This property is situated on a main road with access from a private garden It is fully double glazed and sound insulated to minimise road noise.

Availability and to book online visit [www.eastgatecottages.co.uk](http://www.eastgatecottages.co.uk) or call us on 01751 476653