



## Farndale Cottage, Pickering ★★★★★

Sleeps 2



This ground level cottage has no steps, it is designed with wide doors, walk-in shower and other features which gives this cottage a level 2<sup>i</sup> mobility rating. This cottage has real character with beams, a wood burning stove and lovely big bay window. We have a range of accessible equipment available including a wheelchair, shower stool and toilet seat raiser.

<b>Bedrooms</b>	1
<b>Bathrooms</b>	1
<b>Price Band</b>	A
<b>Garden</b>	Open
<b>Pets</b>	No
<b>Parking</b>	Off Road
<b>Children</b>	Yes
<b>Heating</b>	Gas
<b>One Level</b>	Yes
<b>Fire</b>	Log
<b>Changeover</b>	Friday

<sup>i</sup> Level 2 mobility is typically suitable for a person with restricted walking ability and for those that may need to use a wheelchair some of the time.

## Accommodation

### Ground Floor

Open plan living area.

#### Lounge:

The beamed lounge area has a wood burning stove ideal to cosy up on the sofas on a chilly autumn or winter night. There is a 32" LCD TV, and DVD recorder, and Hi-fi.

#### Dining Area:

The pine dining table is located in the bay window, lovely for breakfast in the morning sun. There is plenty of good quality crockery, cutlery and glassware.

#### Kitchen Area:

The fully fitted kitchen is very well equipped, including dishwasher, microwave, toaster, kettle and electric cooker with ceramic hob. We provide a good range of cooking utensils.

#### Bedroom:

The bedroom is very spacious with a super-king size bed or split into two singles. It has an antique pine wardrobe and drawers. The room accommodates a cot.

#### Bathroom:

The lovely en-suite bathroom has a spacious walk in thermostatically controlled shower, W.C. and washbasin. A heated towel rail to keep the towels warm and dry plus handrails to help you in and out of the shower.

### Outside

#### Garden

Open garden area.

#### Patio

Dedicated patio area table, chairs, and sun umbrella. A BBQ is available.

#### Outbuildings

Laundry room with washing machine, tumble dryer & freezer.

#### Parking

The cottage is in a private courtyard shared with seven other cottages. Plenty of off-road parking is available.





## Local Information

Shops:	Local shop 2 minutes walk.
Nearest Town:	Pickering town centre is 5 minutes walk, has extensive shopping including a small supermarket (Market day is Monday).
Public Transport:	Pickering is well served by bus routes, there is a bus stop within 100 yards of the cottage, we are happy to meet you and help with the luggage. Nearest rail station is in Malton 10 miles from Pickering.
Eating Out:	Pickering has many restaurants and takeaways most within easy walk of the cottages. There is a file in the cottage with sample menus for many local restaurants.
Places to visit and things to do:	We are within walking distance of the North Yorkshire Moors steam railway, Pickering Castle, Beck Isle Museum and the swimming pool. Pickering is on the edge of the North Yorkshire National Park, fantastic for walking or site seeing. Whitby and Scarborough on the coast are within an easy drive as is Castle Howard and a host of other historic properties.

## Facilities

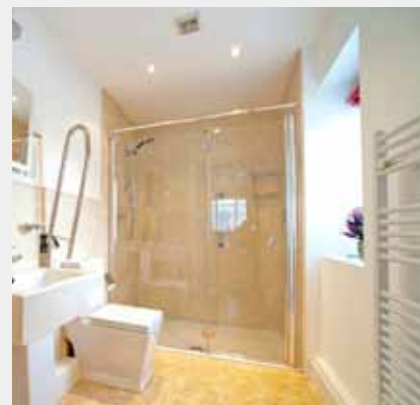
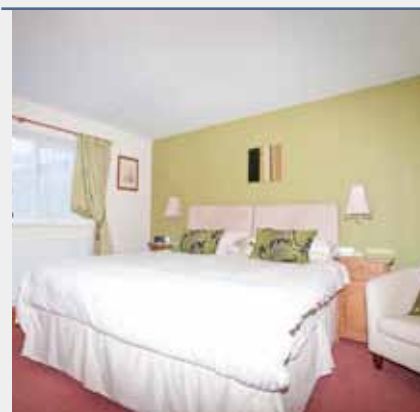
Linen	Luxury duvets, pillows, bed linen, and towels; bath sheet and hand towels plus kitchen linen are provided. Blankets available on request.		
Fuel	Price includes electric, gas central heating, coal, logs, and hot water.		
Kitchen Equipment	Electric Cooker Electric Kettle Denby crockery Utensils	Fridge Toaster Cutlery	Microwave Dishwasher Saucepans
Electronic	32" LCD TV DVD Library	DVD Recorder Hifi with CD and radio	Wi-fi enabled
Visitor Information	Welcome file with an A-Z of useful information as well as a comprehensive tourist information folder with suggested itinerary, walks, events and places to visit.		
Extras	Cot Stair-gate Accessibility Equipment All available on request	Yes Yes Yes	Highchair Daily Cleaning Wheelchair Yes £10 Yes
Office	Internet, email, and fax available at our main office in Pickering		
Laundry	Washing machine and tumble dryer in the on-site laundry room Clothes airer, iron and ironing board available.		
Cleaning Equipment	Cleaning material and equipment, including a vacuum cleaner, are available in the cottage.		
Other Items:	Hair dryer Shaver Point	Books and games Radio Alarm Clock	
Welcome:	All guests are greeted on arrival with site and cottage orientation. A complimentary tea and coffee tray is supplied with fresh milk. All cottages are cleaned prior to your arrival. The normal arrival time is 3pm although you are welcome to arrive earlier and park up on site. Departure time is normally 10am on the day of departure. There is a staffed office on site. (Mon-Sat)		

## Weekly Prices 2010

From	To	Per Week
08 Jan	- 11 Feb	£280.00
12 Feb	- 18 Feb	£310.00
19 Feb	- 25 Mar	£310.00
26 Mar	- 15 Apr	£360.00
16 Apr	- 29 Apr	£350.00
30 Apr	- 06 May	£350.00
07 May	- 27 May	£365.00
28 May	- 03 June	£410.00
04 June	- 24 June	£395.00
25 June	- 01 July	£395.00
02 July	- 08 July	£395.00
09 July	- 15 July	£395.00
16 July	- 26 Aug	£425.00
27 Aug	- 09 Sep	£385.00
10 Sep	- 23 Sep	£365.00
24 Sep	- 07 Oct	£335.00
08 Oct	- 28 Oct	£360.00
29 Oct	- 20 Dec	£295.00
21 Dec	- 06 Jan	£360.00
07 Jan	- 13 Jan	£290.00

3 & 4 night breaks or 3 & 4 night extensions available all year.

Minimum stay 7 nights during peak season. Monday changeover available.



Availability and to book online visit [www.eastgatecottages.co.uk](http://www.eastgatecottages.co.uk) or call us on 01751 476653